

Madison, Wisconsin

# CITY OF MADISON

## CITY ENGINEERING DIVISION

### DEPARTMENT OF PUBLIC WORKS

#### PLAN OF PROPOSED IMPROVEMENT

PUBLIC IMPROVEMENT PROJECT APPROVED

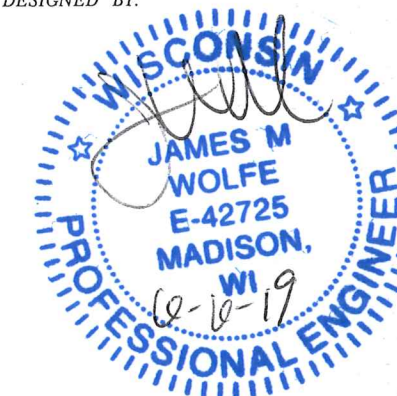
MARCH 19, 2019

BY THE COMMON COUNCIL  
OF MADISON, WISCONSIN

PUBLIC IMPROVEMENT DESIGN  
APPROVED BY:

*[Signature]* 6/6/19  
City Engineer Date

STREET  
DESIGNED BY:



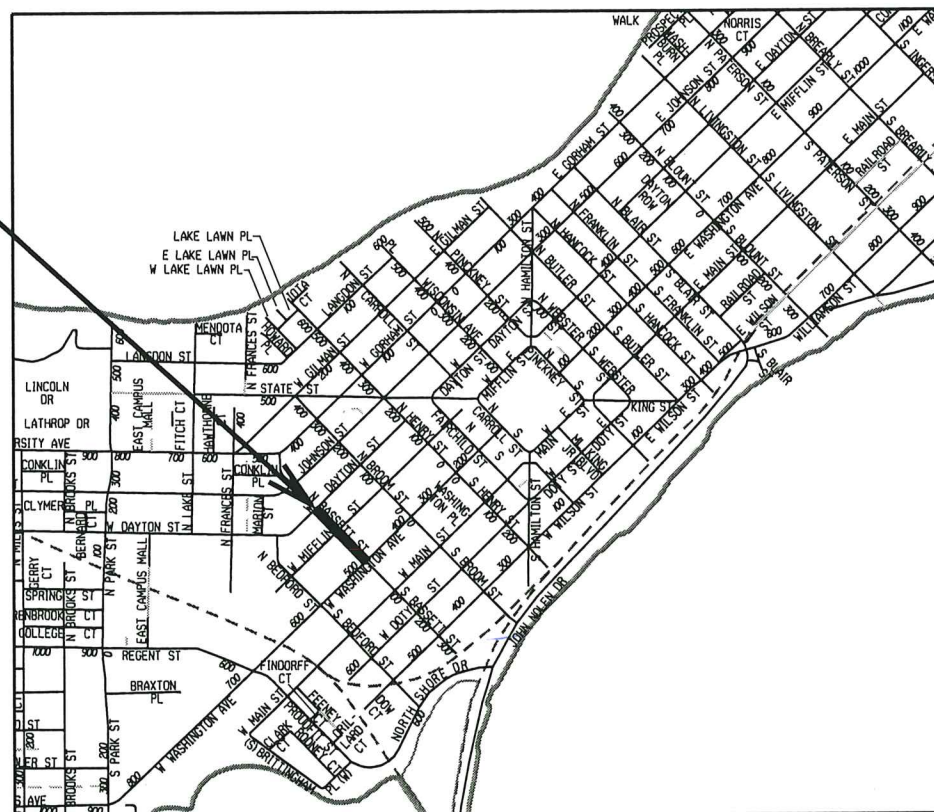
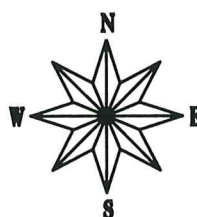
### N. BASSETT STREET ASSESSMENT DISTRICT - 2019

CITY PROJECT NO. 11987  
CONTRACT NO. 8299

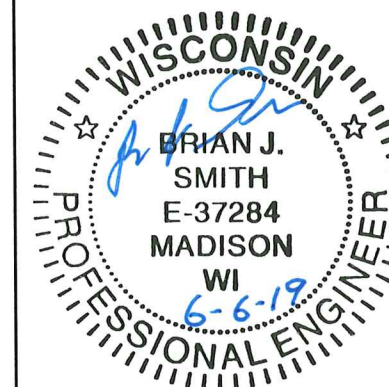
#### INDEX OF SHEETS

SHEET NO.	TITLE
1	
DI	DETAILS
EC1-EC2	EROSION CONTROL PLANS
PI-P2	STREET PLAN & PROFILES
U1-U2	SEWERS PLAN & PROFILES
U3-U4	SEWER SCHEDULES
W1-W2	WATER PLAN & PROFILES
W3	WATER MATERIALS
M1	PAVEMENT MARKING PLAN
E1-E2	ELECTRICAL PLAN
TC1-TC2	TRAFFIC CONTROL PLAN
X1-X5	CROSS SECTIONS

PROJECT  
LOCATION



LIGHTING & SIGNALS  
DESIGNED BY:



STORM & SANITARY SEWER  
DESIGNED BY:



WATER  
DESIGNED BY:



PAVEMENT MARKINGS  
DESIGNED BY:



CONVENTIONAL SIGNS  
FIELD VERIFY ALL UTILITY LOCATIONS

GAS	— G —
STORM SEWER	— ST —
SANITARY SEWER	— SAN —
WATER	— W —
OVERHEAD ELECTRIC	— OH —
BURIED ELECTRIC	— E —
LIGHT POLE	☼

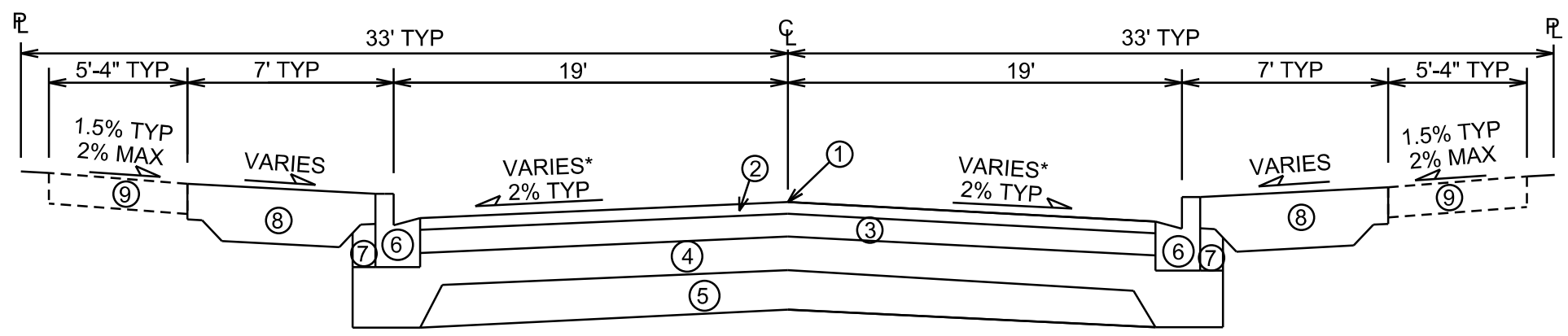
EARTH WORK SUMMARY:  
EXCAVATION CUT (MEASURED PLAN QUANTITY).....2,140 C.Y.  
ESTIMATED UNDISTRIBUTED UNDERCUT.....450 C.Y.  
TOTAL UNCLASSIFIED EXCAVATION CUT.....2,590 C.Y.

PLOT SCALE:

PLOT NAME:

REV. DATE:

ORIGINATOR: CITY OF MADISON, STREETS DIVISION



- ① POINT REFERRED TO ON PROFILE
- ② 2" HMA PAVEMENT, 4 MT 58-28 S
- ③ 3.5" HMA PAVEMENT, 3 MT 58-28 S
- ④ 6" GRADATION 2 CRUSHED AGGREGATE BASE
- ⑤ 6" GRADATION 1 CRUSHED AGGREGATE BASE
- ⑥ TYPE 'H' CONCRETE CURB & GUTTER
- ⑦ FILL, INCIDENTAL
- ⑧ 12" TOPSOIL, SEED & EROSION MAT
- ⑨ 5" CONCRETE SIDEWALK, SEE PLAN FOR LOCATIONS

TYPICAL FINISHED SECTION  
N BASSETT STREET  
NOT TO SCALE

PLOT SCALE: \_\_\_\_\_

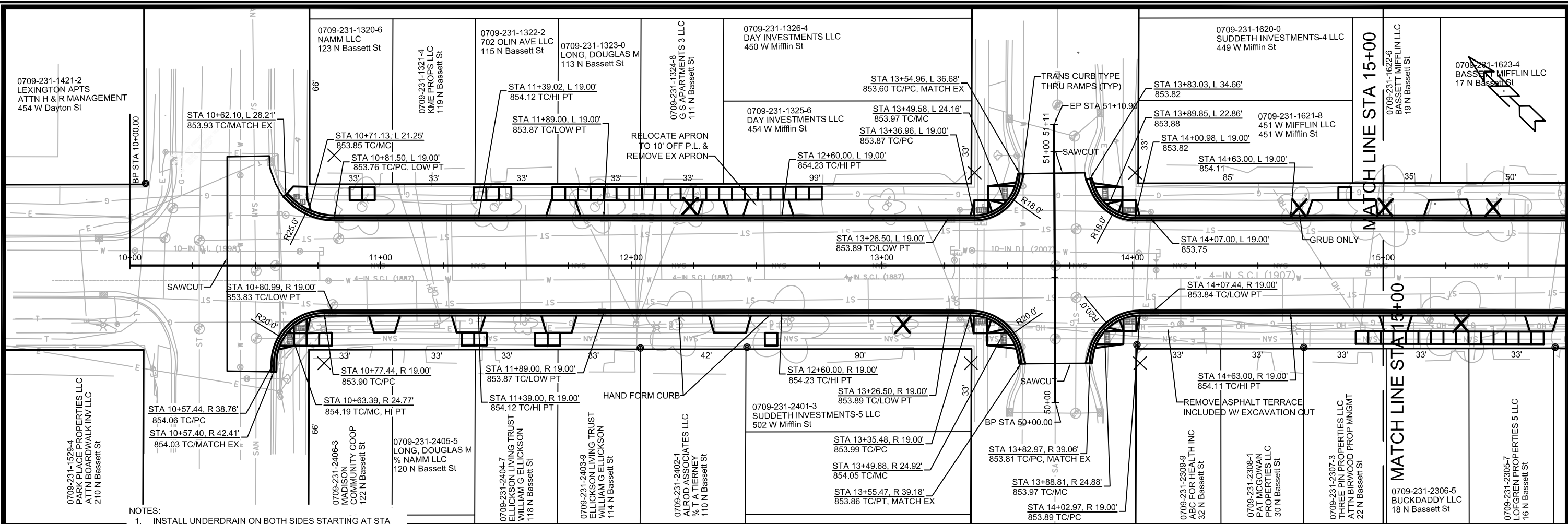
PLOT NAME: \_\_\_\_\_

REV. DATE: \_\_\_\_\_

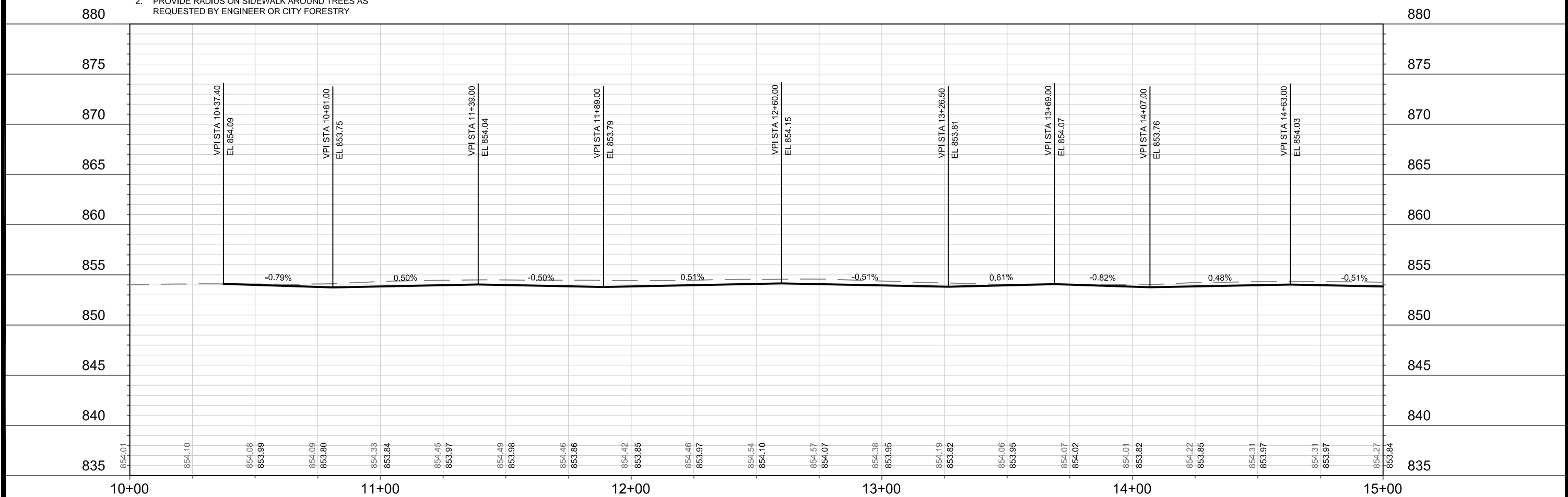
ORIGINATOR: CITY OF MADISON, STREETS DIVISION



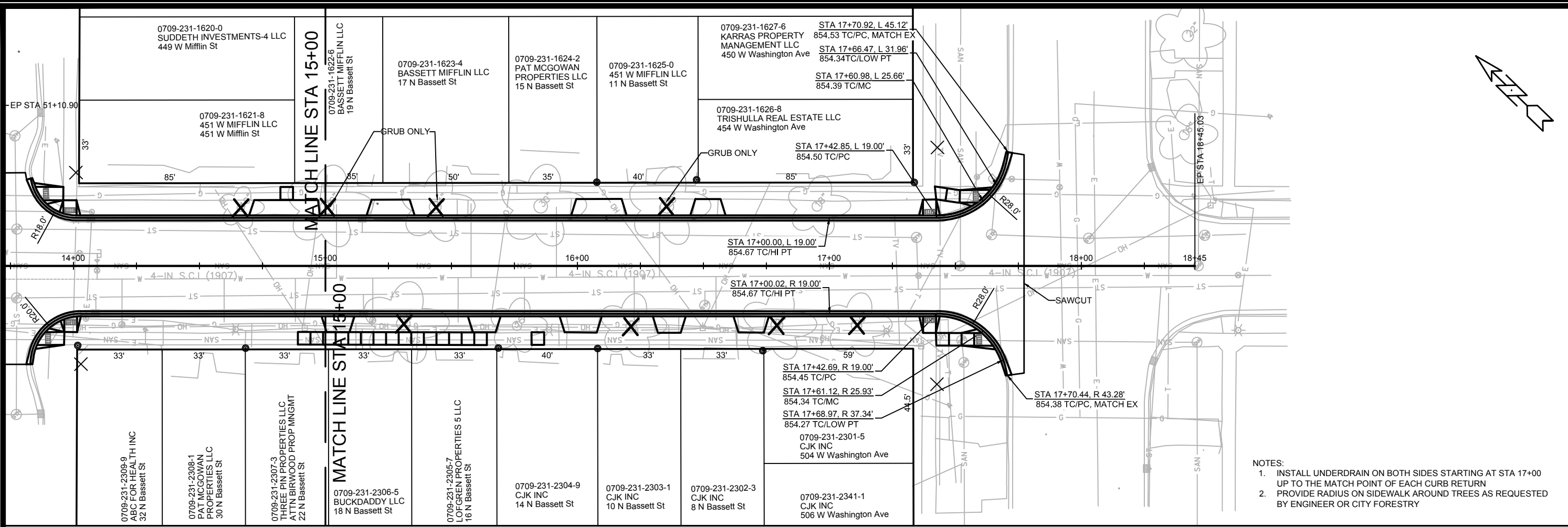




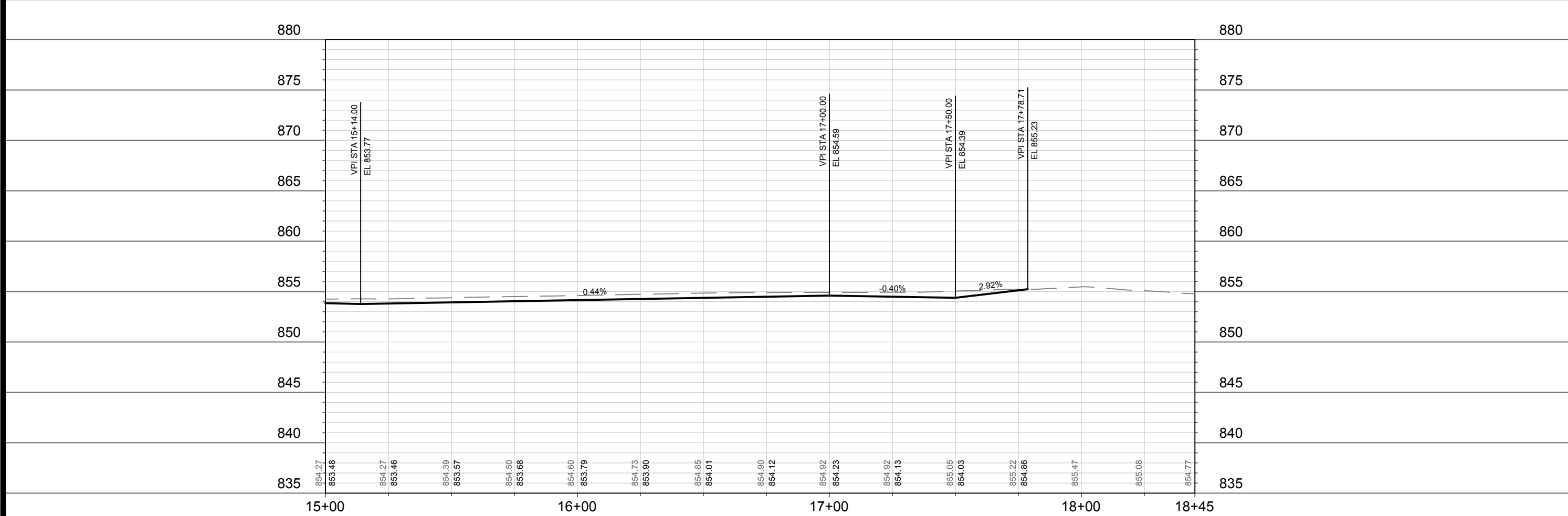
- NOTES:
- INSTALL UNDERDRAIN ON BOTH SIDES STARTING AT STA 17+00 UP TO THE MATCH POINT OF EACH CURB RETURN
  - PROVIDE RADIUS ON SIDEWALK AROUND TREES AS REQUESTED BY ENGINEER OR CITY FORESTRY



11987	MADISON, WI	8299	CONTRACT NO:
P-1	N. BASSETT ST. RECON 2019	CITY OF MADISON	
11987	P-1		



- NOTES:
1. INSTALL UNDERDRAIN ON BOTH SIDES STARTING AT STA 17+00 UP TO THE MATCH POINT OF EACH CURB RETURN
  2. PROVIDE RADIUS ON SIDEWALK AROUND TREES AS REQUESTED BY ENGINEER OR CITY FORESTRY



11987	MADISON, WI	8299
CONTRACT NO. 8299		
CITY OF MADISON		
N. BASSETT ST. RECON 2019		
P-2		
11987		
P-2		







# SANITARY SEWER SCHEDULE

N. BASSETT ST. RECON 2019  
PROJECT NO. 11987

SHEET NO.  
U-3

SANITARY SEWER SCHEDULE

CITY OF MADISON

## PROPOSED SANITARY STRUCTURES

SAS NO.	STATION	LOCATION (OFFSET)	TOP OF CASTING	E.I.	DEPTH	NOTES
<b>N. BASSETT ST</b>						
SAS #1	17+51.96	RT-0.05	854.45	847.16	7.29	[1]
SAS #1A	17+52.01	LT-34.95	854.44	847.31	7.13	-
SAS #2	13+68.93	CL	854.07	847.75	6.32	[1]
SAS #3	11+17.36	CL	853.93	848.15	5.78	[1]

## PROPOSED SANITARY PIPES

FROM (DNSTM)	TO (UPSTM)	DWNSTRM E.I.	UPSTRM E.I.	PLAN (PAY) LGTH (FT)	SLOPE (%)	PIPE SIZE	PVC TYPE	NOTES
<b>N. BASSETT ST</b>								
SAS #1	SAS #2	847.18	847.75	383	0.15%	15"	C900	-
SAS #1	SAS #1A	847.21	847.31	35	0.30%	10"	SDR-35	-
SAS #2	SAS #3	847.77	848.15	252	0.15%	15"	C900	-

## SANITARY STRUCTURE REMOVALS

STRUCTURE ID NO.	STATION	LOCATION (OFFSET)	TOP OF CASTING	E.I.	DEPTH	NOTES
<b>N. BASSETT ST</b>						
SAS 4951-054	10+58.06	RT-0.08	854.07	847.89	6.18	-
SAS 4951-026	13+69.27	RT-0.06	854.07	847.61	6.46	-
SAS 4951-032	17+51.96	RT-0.05	855.06	847.16	7.90	-

## SANITARY PIPES REMOVALS & ABANDONMENTS

REMOVE FROM	REMOVE TO	LGTH (FT)	PIPE SIZE	PIPE TYPE	PAID (Y/N)	NOTES
<b>N. BASSETT ST</b>						
SAS 4951-032	SAS 4951-026	383	15"	VCP	N	-
SAS 4951-026	SAS #3	253	15"	VCP	N	-
SAS #3	SAS 4951-054	58	15"	VCP	Y	-
SAS 4951-032	SAS #1A	35	6"	VCP	N	-

## SANITARY STRUCTURE ADJUSTMENTS

STRUCTURE ID NO.	STATION	LOCATION (OFFSET)	EX RIM	PROP RIM	PROP ADJ	NOTES
<b>S. BLOUNT ST</b>						
SAS 4951-018	10+50.35	RT-29.10	853.84	853.75	-0.09	-
SAS 4951-055	10+50.30	RT-2.10	854.09	853.97	-0.12	-
SAS 4951-027	13+69.20	RT-29.25	853.74	853.76	0.02	-

## SPECIFIC NOTES

[1] INSTALL INTERNAL CHIMNEY SEAL PER S.D.D. 5.7.17

# STORM SEWER SCHEDULE

## PROPOSED STORM STRUCTURES

STRUC. NO.	STATION	LOCATION (OFFSET)	TYPE	TOP OF CASTING	E.I.	DEPTH	NOTES
<b>N. BASSETT ST</b>							
S-1	17+64.41	LT-12.30	6X6 SAS	854.60	849.00	5.60	FP, W/R-1550-0054
S-2	14+07.02	LT-14.30	6X9 SAS	853.40	848.53	4.87	[3], FP
S-3	15+13.80	LT-20.00	4X4 SADDLE SAS	853.85	850.47	3.38	[1] FP, LP, W/R-3067-7004-VB
S-4	13+77.52	LT-14.60	TAP	-	848.45	-	-
S-5	10+83.26	LT-10.70	6X6 SAS	853.51	849.49	4.02	FP, W/R-1550-0054
S-5A	10+81.07	LT-20.00	H INLET	853.76	850.60	3.16	LP, W/R-3067-7004-VB
S-6	13+26.50	LT-20.00	3X6 SADDLE SAS	853.89	850.04	3.85	[1] FP, LP, W/R-3067-7004-VB
S-7	11+89.03	LT-20.00	3X6 SADDLE SAS	853.87	850.54	3.33	[1] FP, LP, W/R-3067-7004-VB
S-20	15+13.80	RT-20.00	SADDLE INLET	853.85	851.28	2.57	[2] FP, LP, W/R-3067-7004-VB
S-21	14+07.00	RT-20.00	SADDLE INLET	853.84	851.40	2.44	[2] FP, LP, W/R-3067-7004-VB
S-22	13+26.50	RT-20.00	SADDLE INLET	853.89	851.49	2.40	[2] FP, LP, W/R-3067-7004-VB
S-23	11+89.00	RT-20.00	SADDLE INLET	853.87	851.66	2.21	[2] FP, LP, W/R-3067-7004-VB
S-24	10+81.00	RT-20.00	SADDLE INLET	853.83	851.79	2.04	[2] FP, LP, W/R-3067-7004-VB

## REMOVE STORM STRUCTURES

ID NO.	STATION	LOCATION (OFFSET)	TYPE	NOTES
<b>N. BASSETT ST</b>				
IN 4951-023	10+80.70	RT-19.72	H INLET	-
IN 4951-024	10+83.48	LT-19.02	H INLET	-
IN 4951-048	11+88.31	RT-18.89	H INLET	-
IN 4951-049	11+89.16	LT-18.75	H INLET	-
IN 4951-122	13+27.05	RT-19.28	H INLET	-
IN 4951-123	13+27.47	LT-18.82	H INLET	-
IN 4951-121	14+06.99	LT-18.95	H INLET	-
IN 4951-120	14+08.70	RT-19.00	H INLET	-
IN 4951-061	15+14.69	LT-19.08	H INLET	-
IN 4951-072	15+15.11	RT-18.84	H INLET	-
AS 4951-062A	17+34.56	LT-11.24	4X4 SAS	-
AS 4951-062	17+64.41	LT-12.34	6X6 SAS	-

## ADJUST STORM STRUCTURES

ID NO.	STATION	LOCATION (OFFSET)	TYPE	EX T.O.C.	PROP T.O.C.	ADJUST	NOTES
<b>N. BASSETT ST</b>							
AS 4951-116	13+77.50	RT-12.73	SAS	854.00	853.81	-0.19	-
AS 4951-118	13+77.50	LT-14.60	SAS	853.85	853.72	-0.13	-
AS 4951-071A	16+50.60	RT-15.80	SAS	854.28	854.06	-0.22	-
IN 4951-078	17+66.75	LT-31.75	INLET	853.07	854.34	1.27	-
IN 4951-074	17+69.00	RT-37.35	INLET	853.45	854.27	0.82	-

**NOTE:** PLAN LENGTH (PAY LENGTH) IS FROM CENTER OF STRUCTURE TO CENTER OF STRUCTURE. PIPE LENGTH IS ACTUAL LENGTH OF PIPE FROM STRUCTURE WALL TO STRUCTURE V PIPE LENGTH.

## SPECIFIC NOTES

- [1] E.I. FOR THE STRUCTURE IS TO THE SPRINGLINE OF THE PIPE BEING SADDLED
- [2] E.I. IS TO THE TOP OF THE ROOF OF THE CONCRETE BOX (5' BOX, 10" ROOF)
- [3] STRUCTURE SHALL HAVE TWO CASTINGS, ONE (1) R-1550-0054 & ONE (1) R-3067-7004-VB. TOC SHOWN IS FOR R-1550-0054 CASTING

## PROPOSED STORM PIPES

PIPE NO.	FROM (DNSTM)	TO (UPSTM)	DISCH. E.I.	INLET E.I.	PLAN (PAY) LGTH (FT)	PIPE LGTH (FT)	SLOPE (%)	PIPE SIZE	TYPE	NOTES
<b>N. BASSETT ST</b>										
P-1	S-1	S-2	849.00	848.53	357	350.1	-0.13%	43"X68"	HERCP	-
P-4	S-4	S-5	848.45	849.49	294	289.9	0.36%	34"X53"	HERCP	-
P-5A	S-5	S-5A	850.56	850.60	10	8	0.50%	12"	RCP	-

## REMOVE STORM PIPES

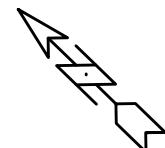
REMOVE FROM	REMOVE TO	LGTH (FT)	PIPE SIZE	PIPE TYPE	PAID (Y/N)	NOTES
<b>N. BASSETT ST</b>						
AS 4951-062A	S-2	327	4X3	BOX	N	-
S-4	S-5	294	3X3	BOX	N	-
STM BOX TAP	AS 4951-062A	15	4X3	BOX	N	-

## STORM SEWER ULOs (5 ADDITIONAL INDISTRIBUTED ULOs INCLUDED)

ULO NO.	STATION	LOCATION (OFFSET)	TYPE	TOP ELEV.	NOTES
<b>N. BASSETT ST</b>					
ULO1	11+26.75	LT-10.75	ELECTRIC	-	-
ULO2	13+39.35	LT-14.00	ELECTRIC DUCT	-	-
ULO3	17+26.15	LT-12.65	TELEVISION	-	-
ULO4	17+45.65	LT-12.35	TELEPHONE	-	-

## STANDARD NOTES:

- ABBREVIATIONS: AE = APRON ENDWALL; RCP = REINFORCED CONCRETE PIPE; HERCP = HORIZONTAL ELLIPTICAL REINFORCED CONCRETE PIPE; DNA = DOES NOT APPLY; SAS = SEWER ACCESS STRUCTURE; LP = LOW POINT INLET STRUCTURE; FP = FIELD POURED STRUCTURE; TR = TOP OF CONCRETE ROOF; NCM = NO CROWN MATCH FOR PIPES; UD = UNDERDRAIN
- APPROXIMATE DISCHARGE E.I. GIVEN, ADJUST E.I. AND PIPE SLOPE IN THE FIELD.
- TOP OF CASTING GRADE GIVEN IS THE TOP OF CURB FOR INLET STRUCTURES AND THE FLOWLINE OF THE CLOSED CASTING FOR SAS's.
- TOP OF CONCRETE ROOF (TR) IS 1.25' BELOW TOP OF CASTING UNLESS OTHERWISE NOTED.
- ALL REINFORCED CONCRETE PIPES TO BE CLASS III UNLESS OTHERWISE NOTED.
- SURVEYOR TO CONFIRM THAT ALL INLET STATION / OFFSETS LINE UP WITH PROPOSED CURB AND GUTTER.
- ALL STRUCTURES CALLED OUT AS FIELD POURED SHALL BE FIELD POURED. ALL OTHER STRUCTURES (NOT INDICATED AS FIELD POURED) SHALL BE SUBMITTED TO CITY ENGINEERING FOR APPROVAL IF PRECAST STRUCTURES ARE PREFERRED. CONTACT KYLE FRANK OF CITY ENGINEERING AT (608) 266-4098 FOR PRECAST APPROVALS, FAX SHOP DRAWINGS TO (608)264-9275, OR EMAIL SHOP DRAWINGS TO KFRANK@CITYOFMADISON.COM.



10+75.6, -5.6LT  
INSTALL TEMP FLUSHING  
DEVICE ON THIS END,  
THEN CONNECT TO EX 10-IN WM

0709-231-1421-2  
LEXINGTON APTS  
ATTN H & R MANAGEMENT  
454 W Dayton St

10+75.6, -4.9LT  
CUT OFF EX 4-IN WM  
AT ABANDONMENT

0709-231-1529-4  
PARK PLACE PROF  
ATTN BOARDWALK  
210 N Bassett St

0709-231-1320-6  
NAMM LLC  
123 N Bassett St

0709-231-1321-4  
KME PROPS LLC  
119 N Bassett St

0709-231-1322-2  
702 OLIN AVE LLC  
115 N Bassett St

0709-231-1323-0  
LONG, DOUGLAS M  
113 N Bassett St

0709-231-1324-8  
S APARTMENTS 3 LLC  
111 N Bassett St

0709-231-1326-4  
DAY INVESTMENTS LLC  
450 W Mifflin St

0709-231-1325-6  
DAY INVESTMENTS LLC  
454 W Mifflin St

0709-231-1620-0  
SUDDETH INVESTMENTS-4 LLC  
449 W Mifflin St

14+09.4, -4.9LT  
INSTALL TEMP FLUSHING  
DEVICE ON THIS END,  
THEN CONNECT TO EX 10-IN WM

0709-231-1621-8  
451 W MIFFLIN LLC  
451 W Mifflin St

13+28.9, -4.1LT  
CUT OFF EX 6-IN WM  
AT ABANDONMENT  
SALVAGE EX REDUCER

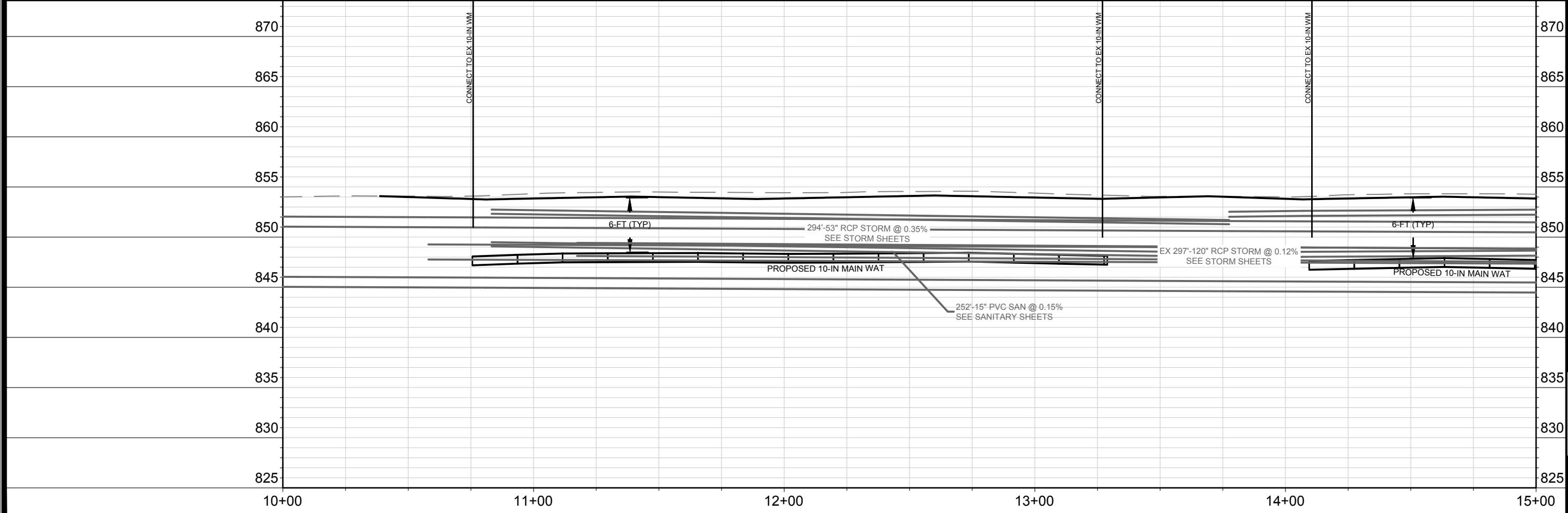
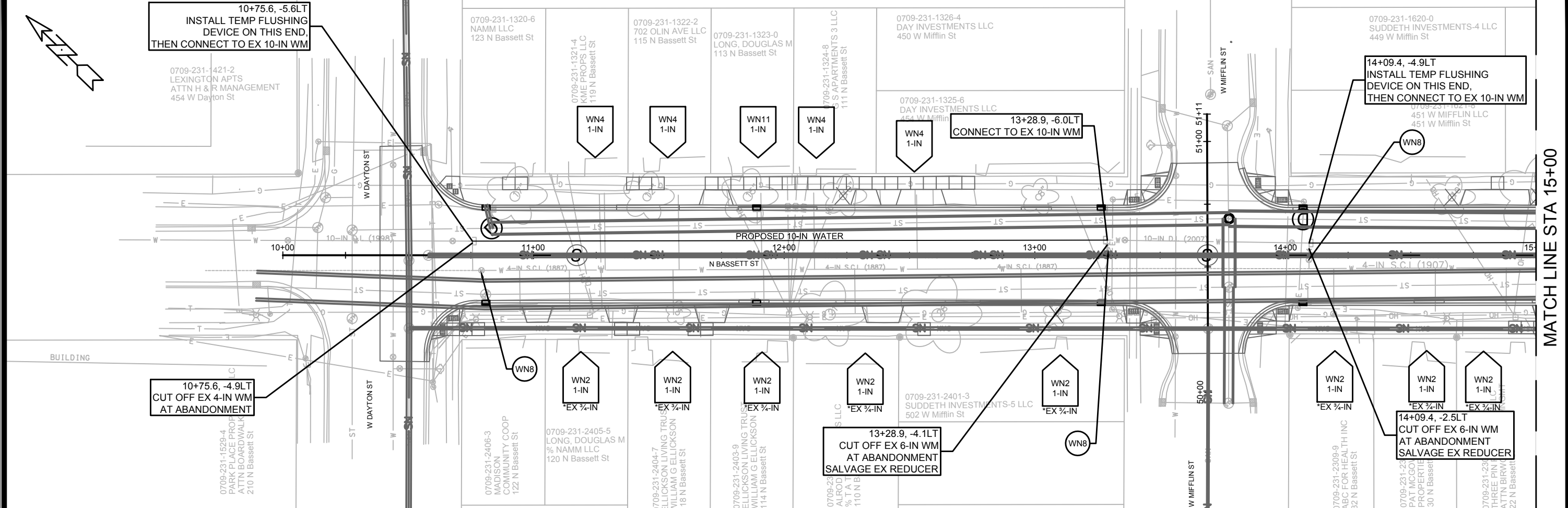
0709-231-2401-3  
SUDDETH INVESTMENTS-5 LLC  
502 W Mifflin St

14+09.4, -2.5LT  
CUT OFF EX 6-IN WM  
AT ABANDONMENT  
SALVAGE EX REDUCER

0709-231-2309-9  
ABC FOR HEALTH INC  
32 N Bassett St

0709-231-231-23  
PAT MCGO...  
PROPERTY  
30 N Bassett St

0709-231-231-23  
THREE PIN  
ATTN BIRWA...  
22 N Bassett St



MATCH LINE STA 15+00

MARK	REVISION	DATE	BY

Scale: 1"=40 FT  
Designed By: PEH  
Date: 6-6-2019  
11987

11987  
MADISON, DANE, WI  
CONTRACT NO: 8299

WATER PLAN AND PROFILE  
N. BASSETT STREET 2019  
CITY OF MADISON



11987  
W-1



**CONSTRUCTION NOTES:**

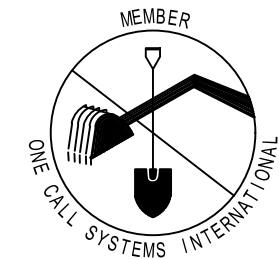
- |   |  |
|---|--|
| <ol style="list-style-type: none"> <li>1. CONSTRUCT NEW WATER MAIN 6.0' BELOW FINISHED GRADE, UNLESS OTHERWISE NOTED. INSULATE MAIN WITH POLYSTYRENE BOARD AT STORM SEWER CROSSINGS OR OTHER AREAS IDENTIFIED BY ENGINEER AS HAVING INADEQUATE COVER.</li> <li>2. VERIFY SIZE OF EXISTING WATER SERVICES AND RECONNECT SERVICES AS INDICATED.</li> <li>3. MINIMIZE DISRUPTION OF SERVICE TO CUSTOMERS. NOTIFY PER CONTRACT REQUIREMENTS OF ANY PLANNED WATER OUTAGE.</li> <li>4. THE EXISTING UTILITIES SHOWN ON THIS PLAN REPRESENT THE BEST INFORMATION AVAILABLE TO THE WATER UTILITY AT THE TIME OF PLAN PREPARATION. CONTRACTOR IS RESPONSIBLE OR HAVING EACH UTILITY LOCATED PRIOR TO COMMENCING WORK.</li> </ol> | <p>WN-1 REPLACE THE EXISTING LEAD SERVICE WITH A NEW COPPER SERVICE.</p> <p>WN-2 EXTEND AND RECONNECT THE EXISTING COPPER SERVICE TO THE NEW WATER MAIN.</p> <p>WN-3 EXISTING SERVICE TO BE ABANDONED WHEN THE WATER MAIN IS CUT OFF.</p> <p>WN-4 DISCONNECT FROM THE OLD WATER MAIN AND RECONNECT THE EXISTING COPPER WATER SERVICE LATERAL TO THE NEW WATER MAIN.</p> <p>WN-5 RELOCATE THE EXISTING FIRE HYDRANT.</p> <p>WN-6 ABANDON WATER VALVE ACCESS STRUCTURE.</p> <p>WN-7 FURNISH AND INSTALL THE NEW TOP SECTION FOR THE WATER ACCESS STRUCTURE.</p> <p>WN-8 ABANDON THE VALVE BOX.</p> <p>WN-9 FURNISH THE DITCH, COMPACTION, AND ALL MATERIALS AND LABOR FOR THE INSTALLATION OF NEW SERVICE LATERAL.</p> <p>WN-10 REMOVE AND SALVAGE EXISTING HYDRANT</p> <p>WN-11 REPLACE THE EXISTING COPPER SERVICE WITH A COPPER SERVICE</p> <p>WN-20+ SEE WATER IMPACT PLAN FOR CONNECTION POINT ISOLATION AND WATER SHUT-OFF NOTIFICATION INFORMATION.</p> |
|---|--|

**DISCLAIMER NOTE:** UTILITY LOCATIONS SHOWN ARE APPROXIMATE ONLY. IT SHALL BE THE CONTRACTOR'S RESPONSIBILITY TO DETERMINE THE EXACT HORIZONTAL AND VERTICAL LOCATION OF ALL EXISTING UNDERGROUND AND OVERHEAD UTILITIES PRIOR TO COMMENCING WORK.

TO OBTAIN LOCATION OF PARTICIPANTS' UNDERGROUND FACILITIES BEFORE YOU DIG IN WISCONSIN

CALL DIGGERS HOTLINE TOLL FREE  
811 OR 1-800-242-8511  
FAX-A-LOCATE 1-800-338-3860  
TDD (FOR HEARING IMPAIRED) 1-800-542-2289

WIS. STATUTE 182.0175 (1974) REQUIRES MIN. OF 3 WORK DAYS NOTICE BEFORE YOU EXCAVATE.



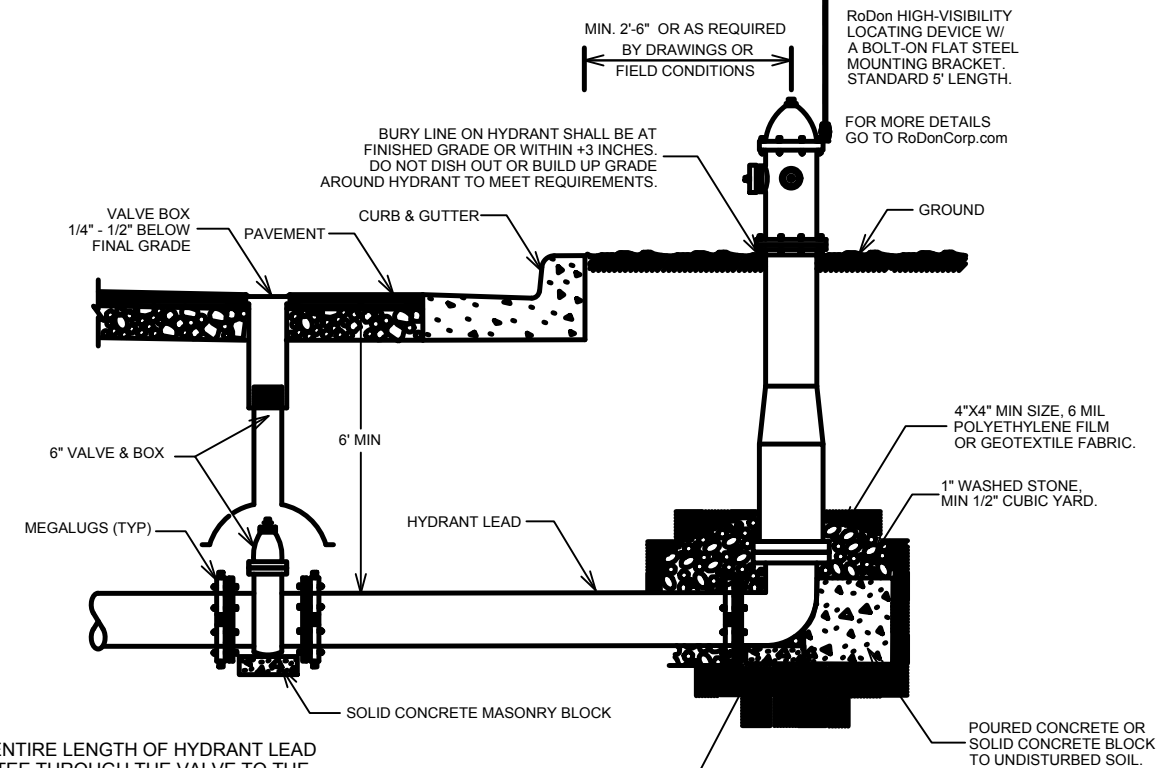
**ESTIMATE OF CONTRACTOR MATERIALS:**

WATER ASSETS	TOTAL
4-IN PIPE (LF)	<10
10-IN PIPE (LF)	620
POLY WRAP	700
4-IN VALVE & BOX	1
10-IN X 4-IN TEE	1
10-IN 45 BEND	2
4-IN 90 BEND	2
4-IN MJ PLUG	1
6-IN MJ PLUG	2
4-IN MJ CAP	1
TEMP FLUSHING FIXTURE	2
2-IN STYROFOAM (LF)	40
1-IN COPPER PIPING	AS REQ

**PART VII - WATER MAINS AND SERVICE LATERALS**

**DETAIL DRAWING NO. 7.04**

REVISED: 12/2015



**NOTE:**

1. RESTRAIN ENTIRE LENGTH OF HYDRANT LEAD FROM THE TEE THROUGH THE VALVE TO THE HYDRANT AS SPECIFIED USING JOINT RESTRAINTS PER SECTION 703.10

CITY OF MADISON  
WATER UTILITY

NOT TO SCALE

TYPICAL HYDRANT INSTALLATION

DATE	BY
REVISION	DATE
MARK	DESIGNED BY: PEH
Scale: #####	11987
W-3	

11987  
MADISON, DANE, WI  
CONTRACT NO: 8299

MSN WAT MATERIALS  
N. BASSETT STREET 2019  
CITY OF MADISON

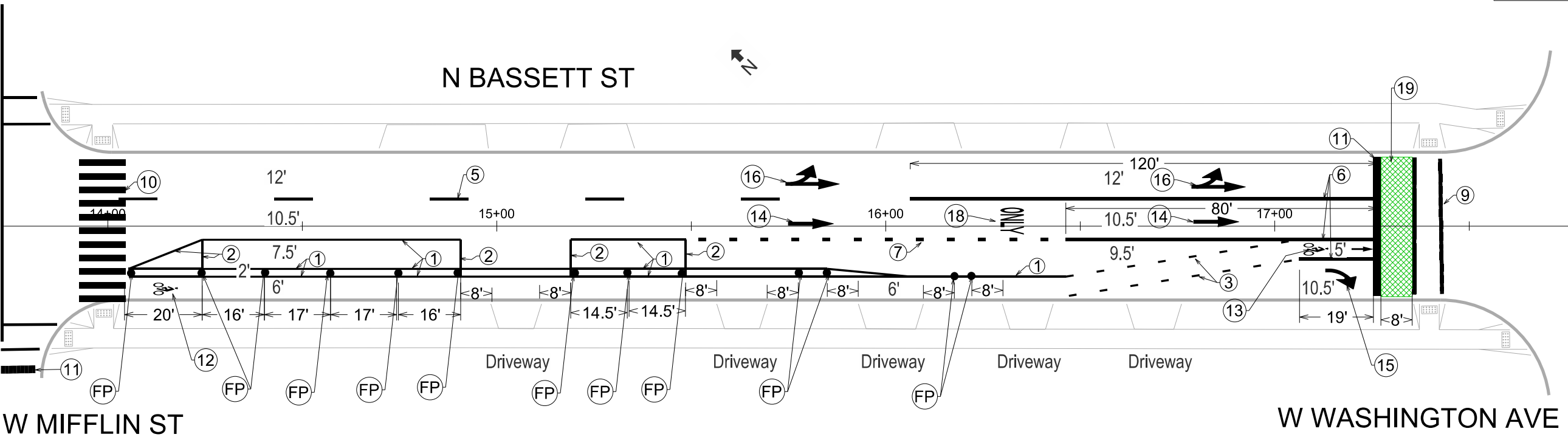
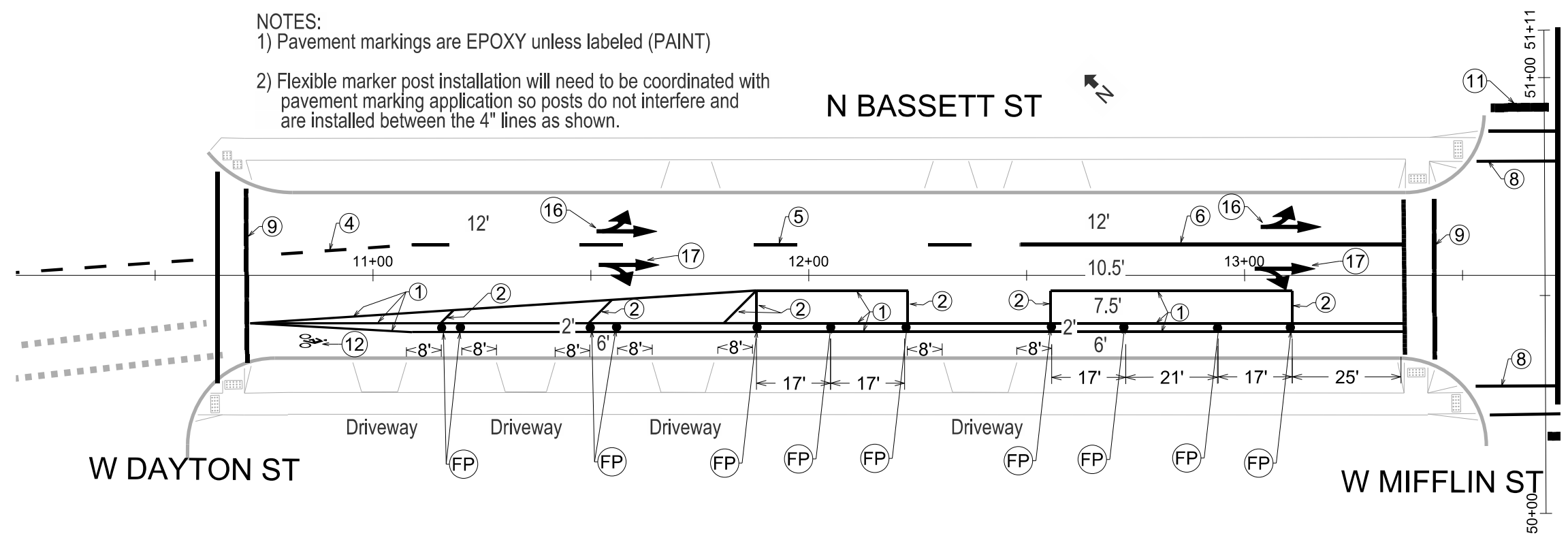


11987  
W-3

NOTES:  
1) Pavement markings are EPOXY unless labeled (PAINT)  
2) Flexible marker post installation will need to be coordinated with pavement marking application so posts do not interfere and are installed between the 4" lines as shown.

- Pavement Marking Legend**
- ① Line 4", White (PAINT)
  - ② Line 4", Diagonal White (PAINT)
  - ③ Line 4", 2' Line x 6' Gap White (PAINT)
  - ④ Line 6", 5' Line x 5' Gap White
  - ⑤ Line 6", 10' Line x 30' Gap White
  - ⑥ Line 8", Solid White
  - ⑦ Line 8", 2' Line x 6' Gap White
  - ⑧ Crosswalk, 6"
  - ⑨ Crosswalk, 12"
  - ⑩ Crosswalk, Continental
  - ⑪ Stop Line, 24"
  - ⑫ Symbol, Bike (PAINT)
  - ⑬ Symbol Bike Lane & Straight Arrow
  - ⑭ Symbol Straight Arrow
  - ⑮ Symbol Right Arrow
  - ⑯ Symbol Straight & Left Arrow
  - ⑰ Symbol Straight & Right Arrow
  - ⑱ Symbol, Word, ONLY
  - ⑲ Green High Friction MMA

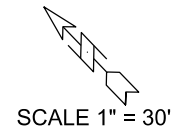
- Flexible Marker Post Legend**
- Ⓢ Flexible Marker Post



PLOT SCALE:  
PLOT NAME:  
REV. DATE:  
ORIGINATOR: CITY OF MADISON, TRAFFIC ENG. DIV.

ELECTRICAL PLANS

N BASSETT ST CITY OF MADISON



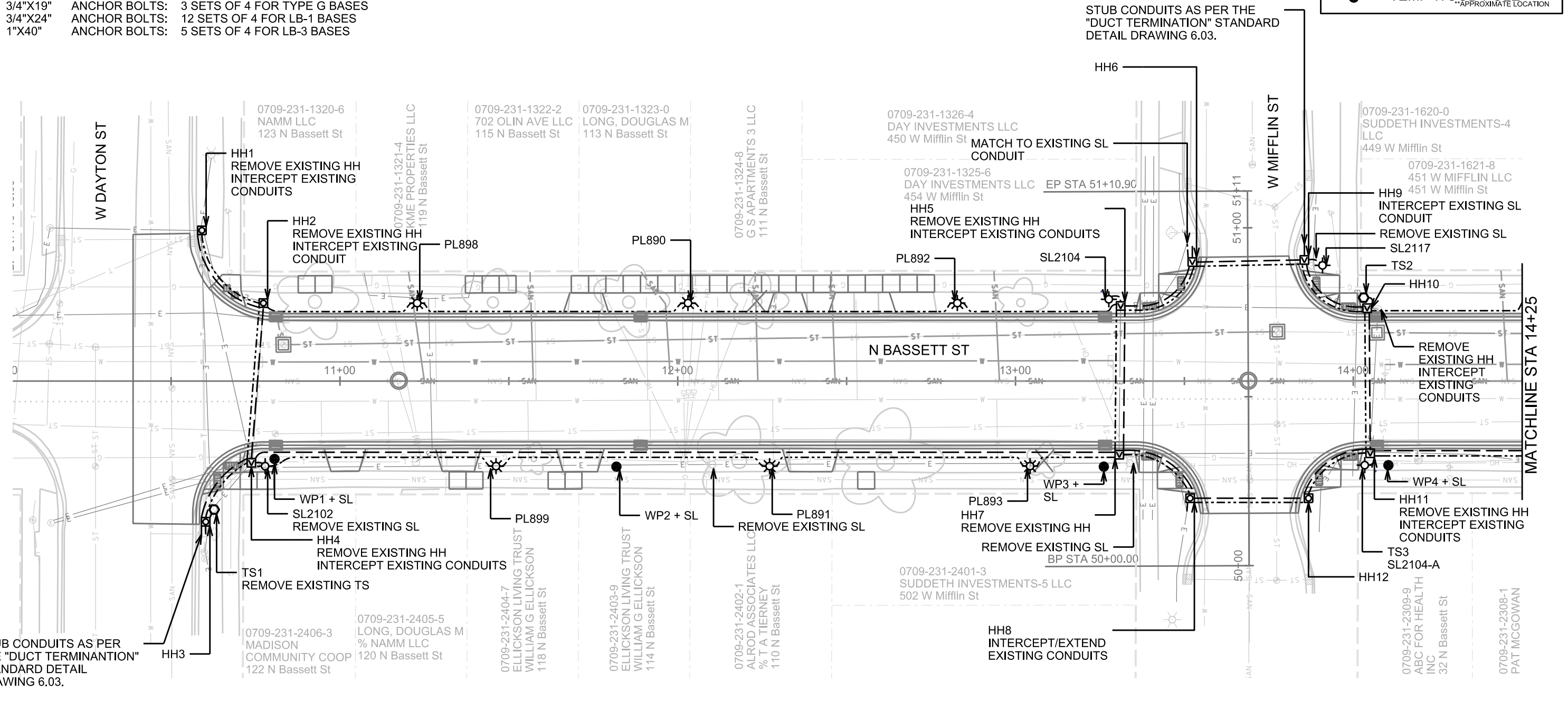
GENERAL ELECTRIC NOTES

1. ALL LOCATIONS ARE APPROXIMATE. THE TRAFFIC ENGINEER SHALL APPROVE FINAL LOCATIONS, INCLUDING SETBACK, IN THE FIELD. AFTER CONTRACTOR SURVEYS STAKING, THE CONTRACTOR SHALL NOTIFY GRETCHEN AVILES PINEIRO (266-4899) CITY TRAFFIC ENGINEERING, AT LEAST 24-HOURS IN ADVANCE OF NEEDING BASE LOCATIONS MARKED.
2. BASES INSTALLED IN TERRACE SHALL BE 4' FROM FACE OF CURB UNLESS OTHERWISE NOTED. SUBJECT TO NOTE 1 ABOVE.
3. THE CONTRACTOR SHALL DO ALL WORK IN ACCORDANCE WITH "CITY OF MADISON STANDARD SPECIFICATIONS FOR PUBLIC WORKS CONSTRUCTION, 2019 EDITION" AND ALL ADDENDUMS THERETO. ALL CONDUITS SHALL BE PVC, SCHEDULE 80 UNDER PAVEMENT OR SCHEDULE 40 OTHERWISE.
4. THE CONTRACTOR SHALL CALL TROY VANT (395-1975) AT THE TRAFFIC ENGINEERING SHOP AT LEAST 24-HOURS IN ADVANCE OF POURING BASES OR BURYING CONDUIT TO ARRANGE FOR INSPECTION. ANY WORK COMPLETED WITHOUT INSPECTION IS SUBJECT TO REJECTION.
5. THE CONTRACTOR SHALL ARRANGE FOR PICKUP OF THE FOLLOWING CITY FURNISHED MATERIALS, WHICH SHOULD BE ARRANGED FOR PICKUP BY CALLING ED SMITH, TRAFFIC ENGINEERING SHOP, 266-9034, 1120 SAYLE ST, AT LEAST 24-HOURS PRIOR TO NEEDING MATERIALS:

- 3/4"X19" ANCHOR BOLTS: 3 SETS OF 4 FOR TYPE G BASES
- 3/4"X24" ANCHOR BOLTS: 12 SETS OF 4 FOR LB-1 BASES
- 1"X40" ANCHOR BOLTS: 5 SETS OF 4 FOR LB-3 BASES

**LEGEND**

- G BASE
- LB-1 BASE
- LB-3 BASE
- HANDHOLE TYPE 1
- HANDHOLE TYPE 5
- (1) - 2" CONDUIT\*  
\*UNLESS NOTED AS OTHER
- (1) - 3" CONDUIT\*  
\*UNLESS NOTED AS OTHER
- EXISTING ELEC CONDUIT  
TO BE MAINTAINED
- TEMP WOOD POLE\*\*  
\*\*APPROXIMATE LOCATION

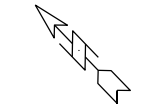


PLOT SCALE: PLOT NAME: REV. DATE: ORIGINATOR: CITY OF MADISON, TRAFFIC ENG. DIV.

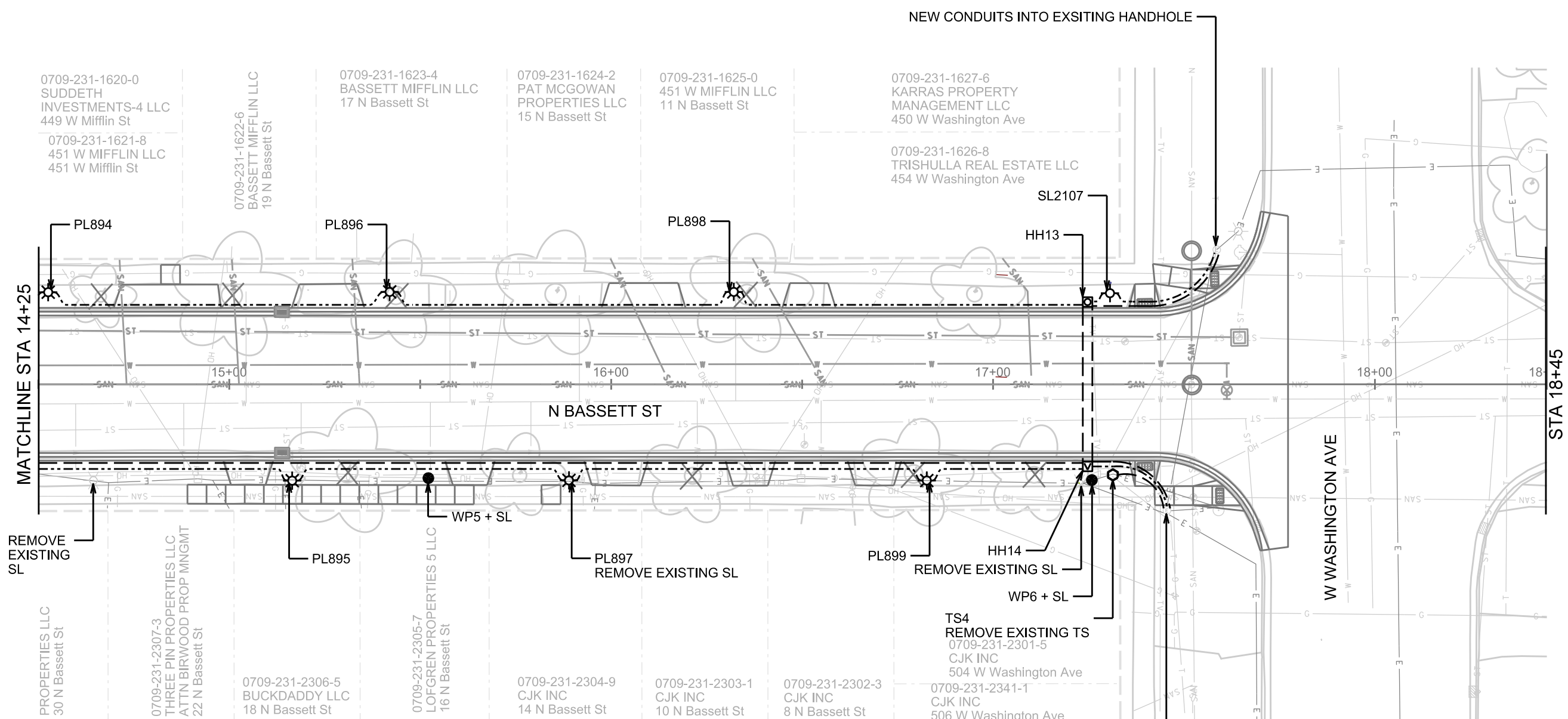
ELECTRICAL PLANS

N BASSETT ST

CITY OF MADISON



SCALE 1" = 30'



0709-231-1620-0  
SUDDETH  
INVESTMENTS-4 LLC  
449 W Mifflin St

0709-231-1621-8  
451 W MIFFLIN LLC  
451 W Mifflin St

0709-231-1622-6  
BASSETT MIFFLIN LLC  
19 N Bassett St

0709-231-1623-4  
BASSETT MIFFLIN LLC  
17 N Bassett St

0709-231-1624-2  
PAT MCGOWAN  
PROPERTIES LLC  
15 N Bassett St

0709-231-1625-0  
451 W MIFFLIN LLC  
11 N Bassett St

0709-231-1627-6  
KARRAS PROPERTY  
MANAGEMENT LLC  
450 W Washington Ave

0709-231-1626-8  
TRISHULLA REAL ESTATE LLC  
454 W Washington Ave

REMOVE  
EXISTING  
SL

PROPERTIES LLC  
30 N Bassett St

0709-231-2307-3  
THREE PIN PROPERTIES LLC  
ATTN BIRWOOD PROP MNGMT  
22 N Bassett St

0709-231-2306-5  
BUCKDADDY LLC  
18 N Bassett St

0709-231-2305-7  
LOFGREN PROPERTIES 5 LLC  
16 N Bassett St

0709-231-2304-9  
CJK INC  
14 N Bassett St

0709-231-2303-1  
CJK INC  
10 N Bassett St

0709-231-2302-3  
CJK INC  
8 N Bassett St

TS4  
REMOVE EXISTING TS  
0709-231-2301-5  
CJK INC  
504 W Washington Ave

0709-231-2341-1  
CJK INC  
506 W Washinaton Ave

**LEGEND**

- G BASE
- LB-1 BASE
- LB-3 BASE
- HANDHOLE TYPE 1
- HANDHOLE TYPE 5
- (1) - 2" CONDUIT\*  
\*UNLESS NOTED AS OTHER
- (1) - 3" CONDUIT\*  
\*UNLESS NOTED AS OTHER
- EXISTING ELEC CONDUIT  
TO BE MAINTAINED
- TEMP WOOD POLE\*\*  
\*\*APPROXIMATE LOCATION

PLOT SCALE:

PLOT NAME:

REV. DATE:

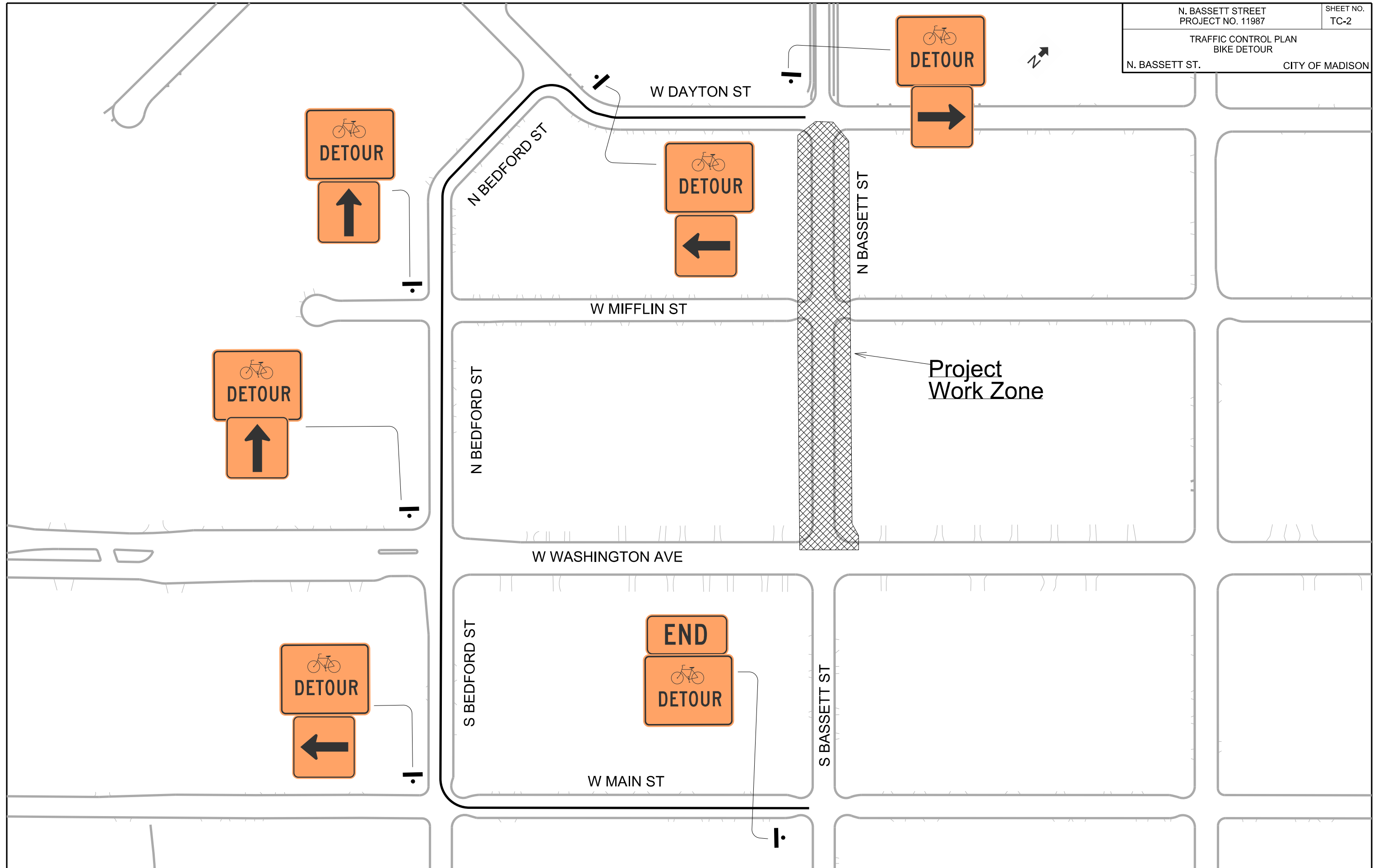
ORIGINATOR: CITY OF MADISON, TRAFFIC ENG. DIV.



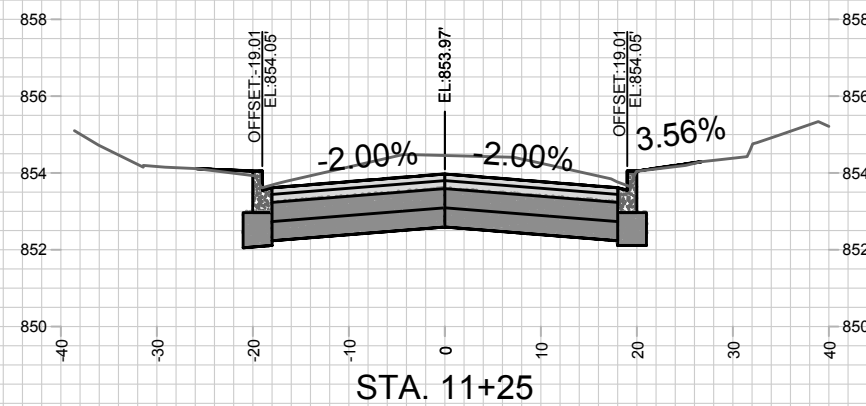
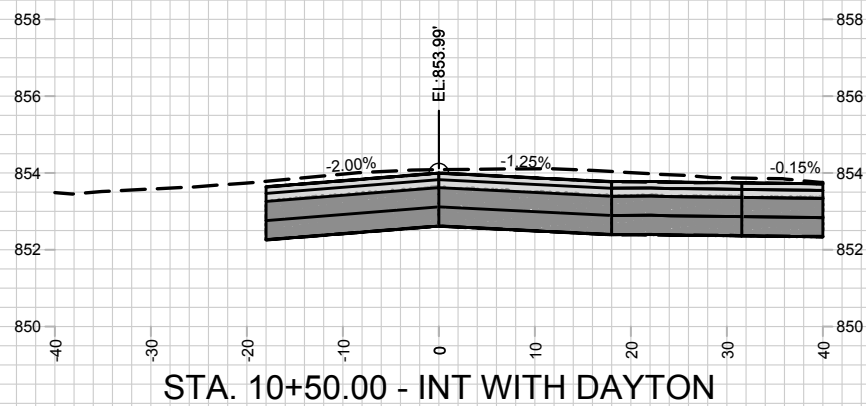
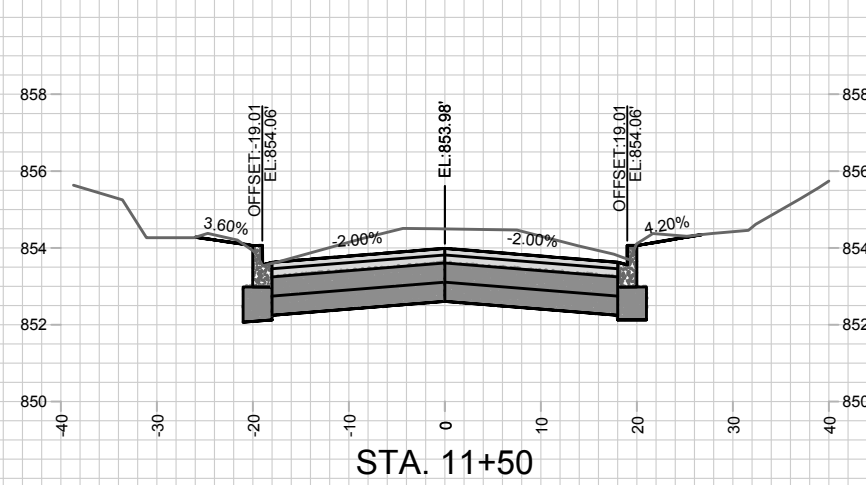
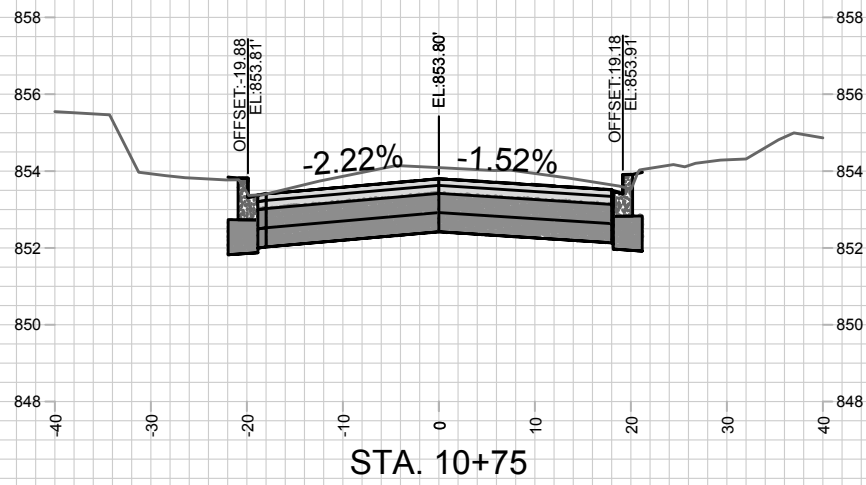
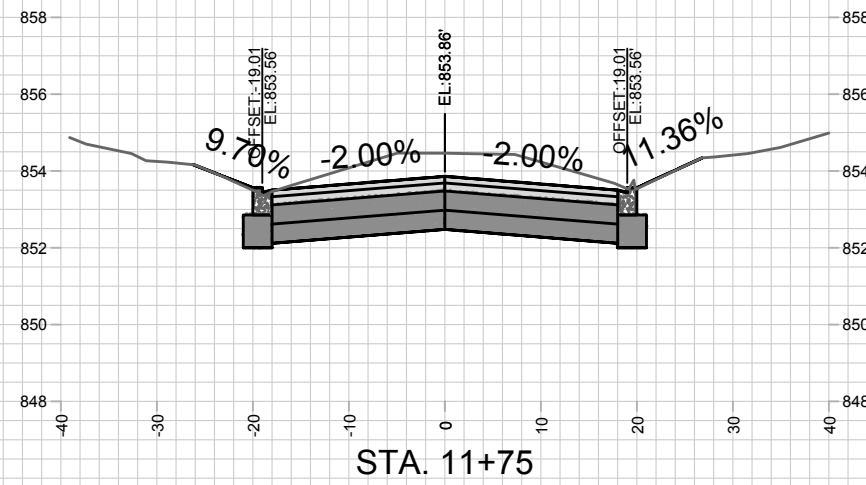
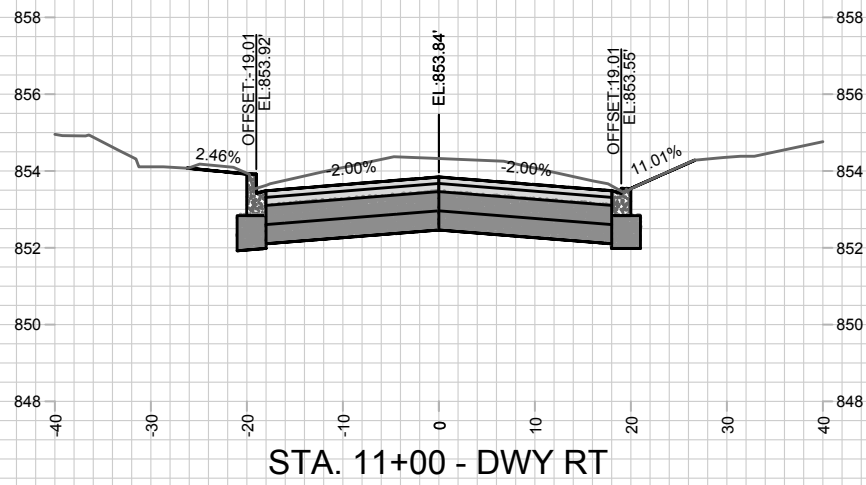


- NOTES:**
- 1) CHANGEABLE MESSAGE BOARDS (CHB) IN PLACE SEVEN DAYS PRIOR TO CLOSURE. REMOVED AFTER CLOSURE
  - 2) SIGNS IN PLACE DURING CLOSURE FOR DURATION OF PROJECT.
  - 3) CHB MESSAGE: BASSETT ST CLOSED DATE TO DATE

PLOT SCALE:  
PLOT NAME:  
REV. DATE:  
ORIGINATOR: CITY OF MADISON, TRAFFIC ENG. DIV.



PLOT SCALE:  
 PLOT NAME:  
 REV. DATE:  
 ORIGINATOR: CITY OF MADISON, TRAFFIC ENG. DIV.



MARK	REVISION	DATE	BY
Designed By: JMW	Date: 5-13-19		
11987			X-1

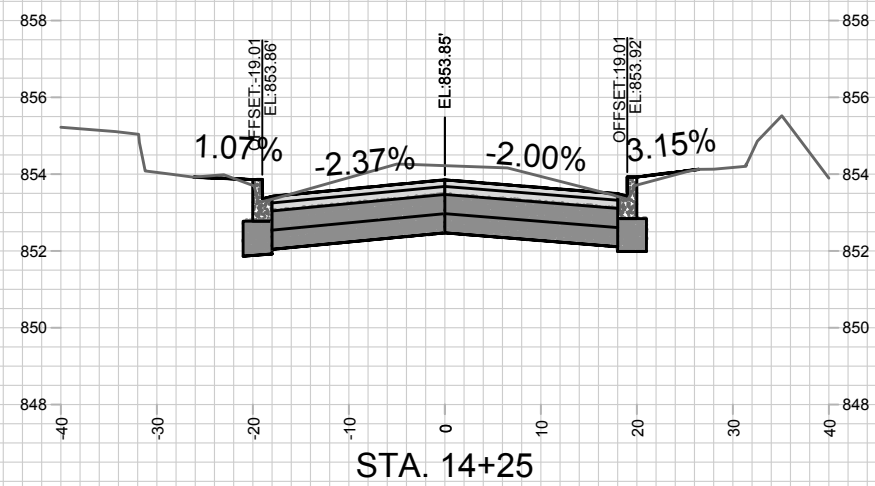
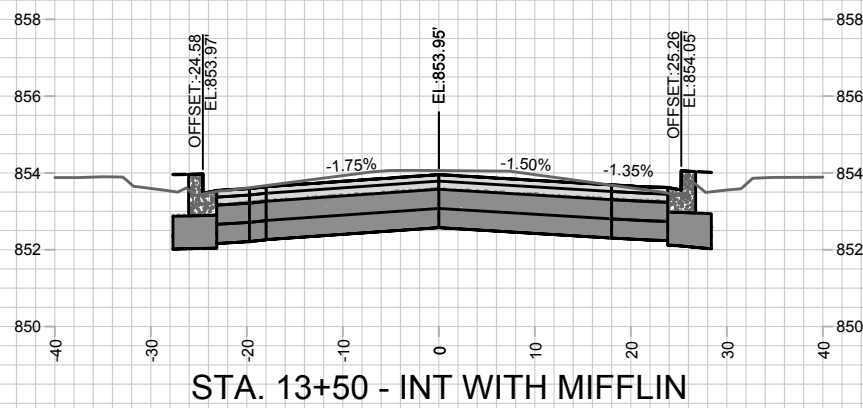
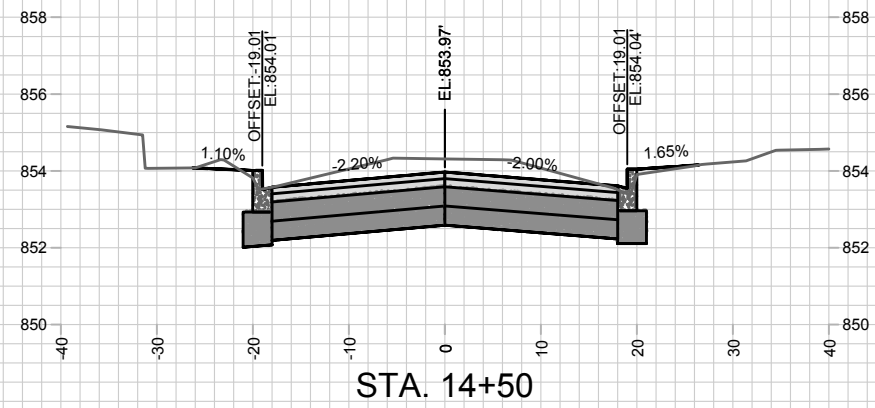
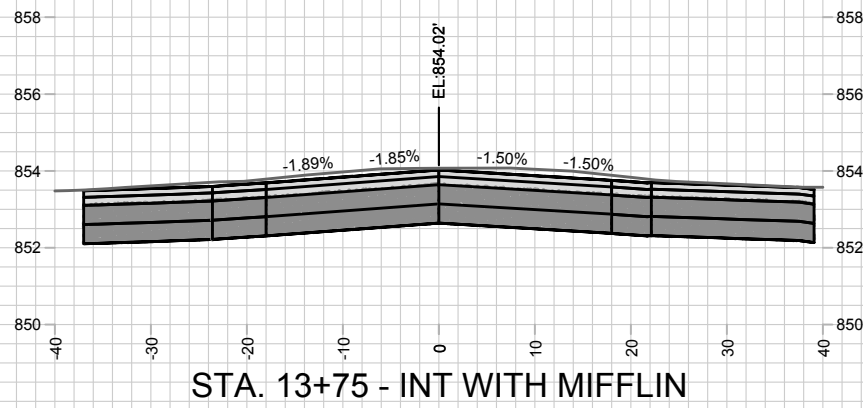
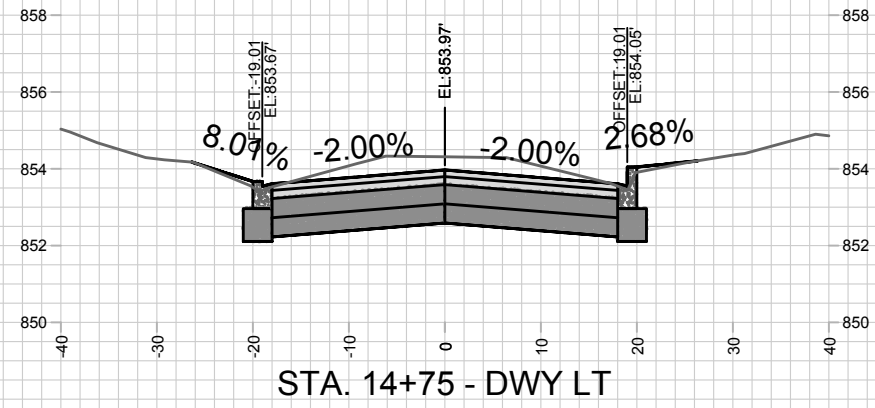
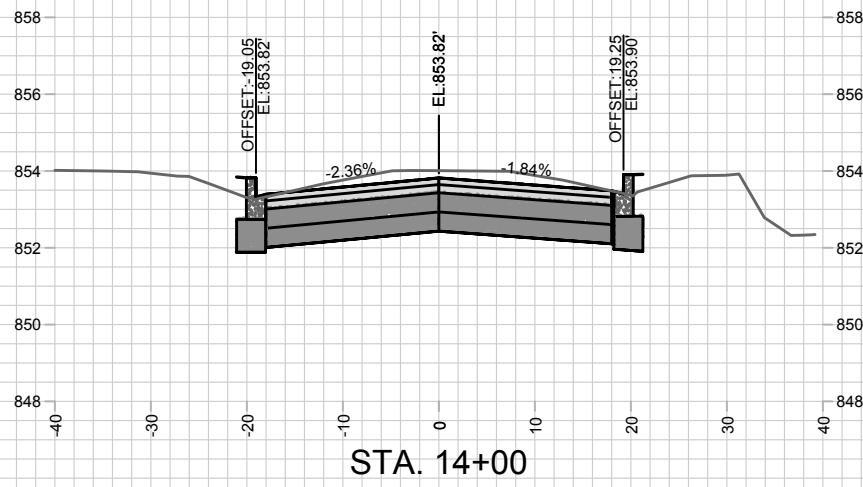
11987  
MADISON, WI  
8299  
CONTRACT NO:

CROSS SECTIONS  
N. BASSETT ST. RECON 2019  
CITY OF MADISON



11987  
X-1





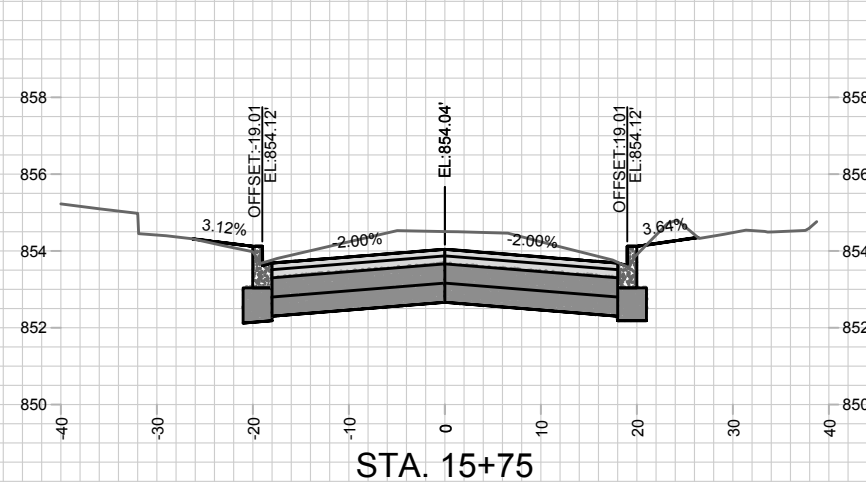
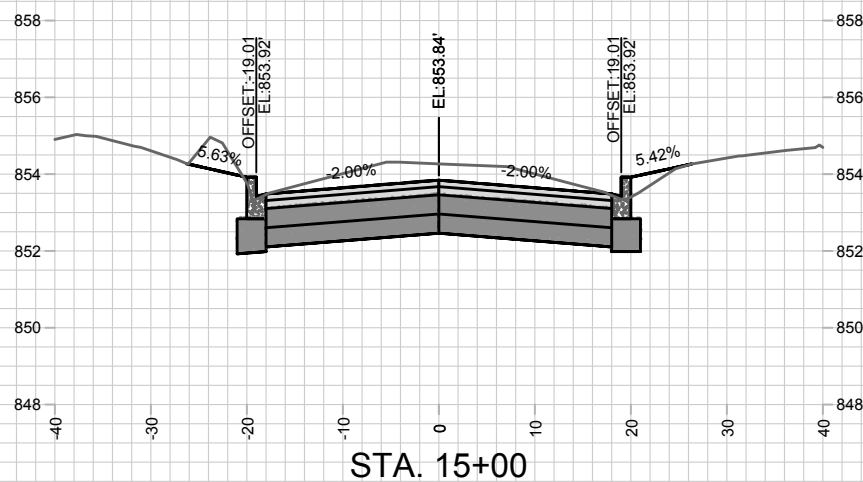
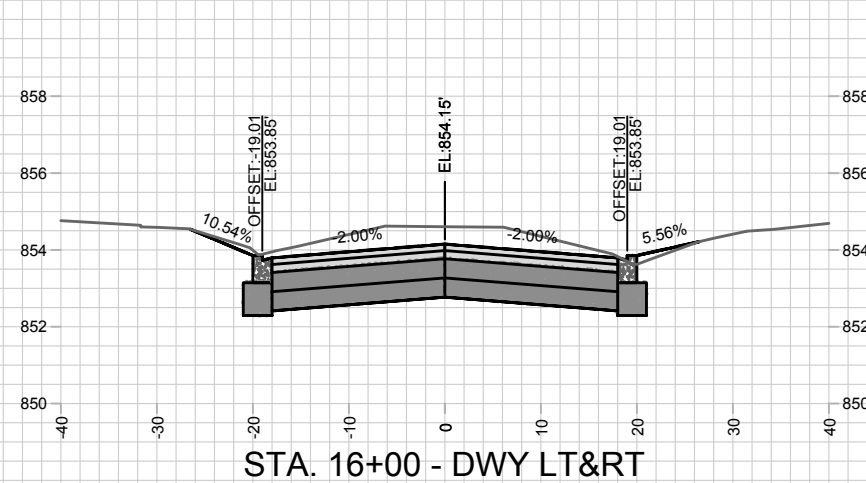
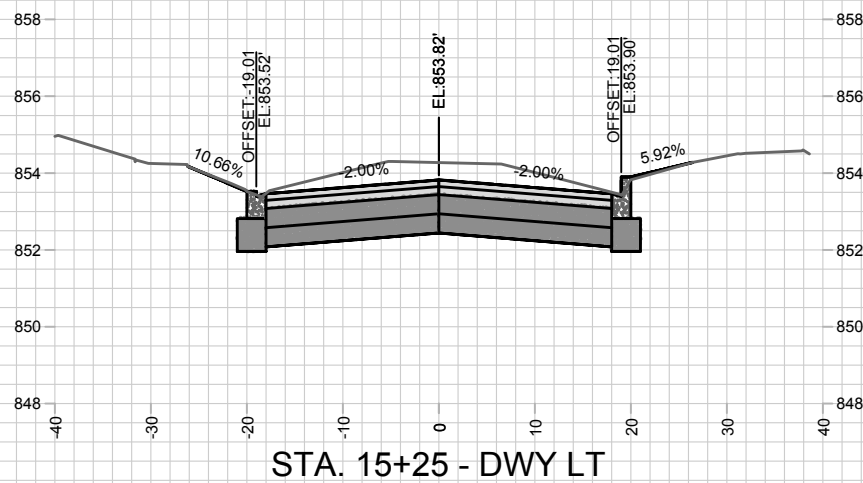
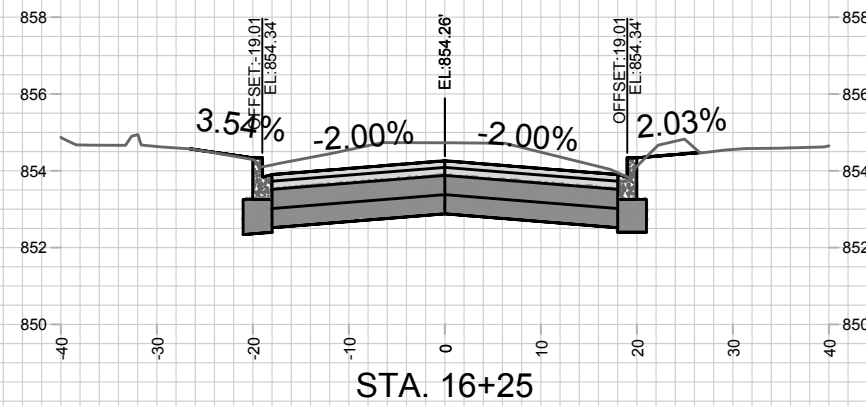
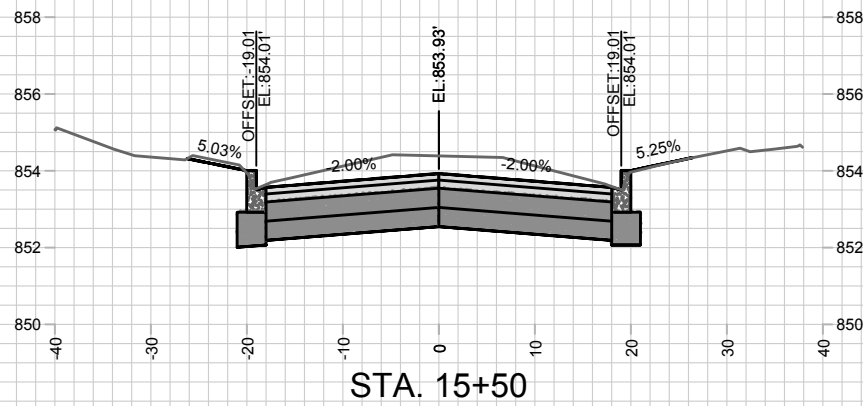
MARK	REVISION	DATE	BY
Designed By: JMW	Date: 5-13-19	Scale: 1" = 20'	X-3


11987  
 MADISON, WI  
 CONTRACT NO: 8299

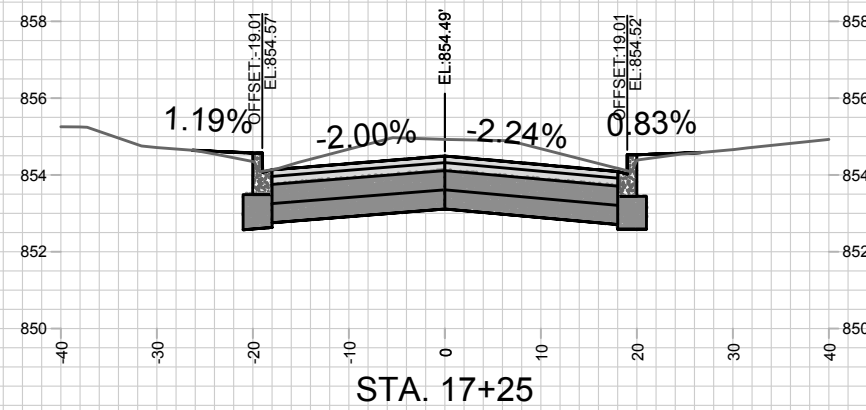
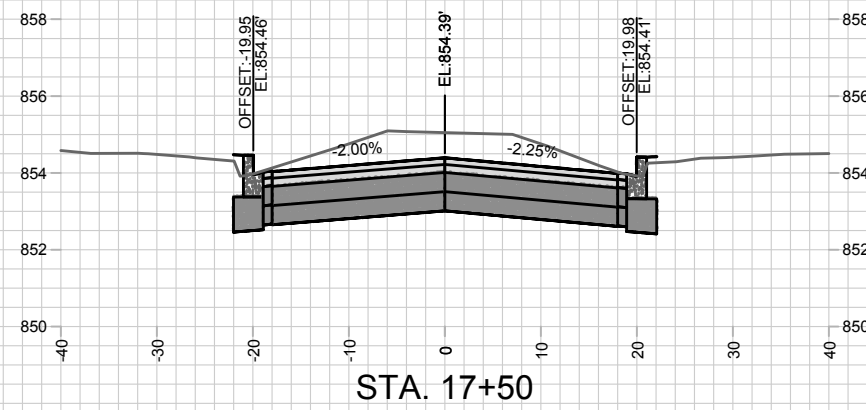
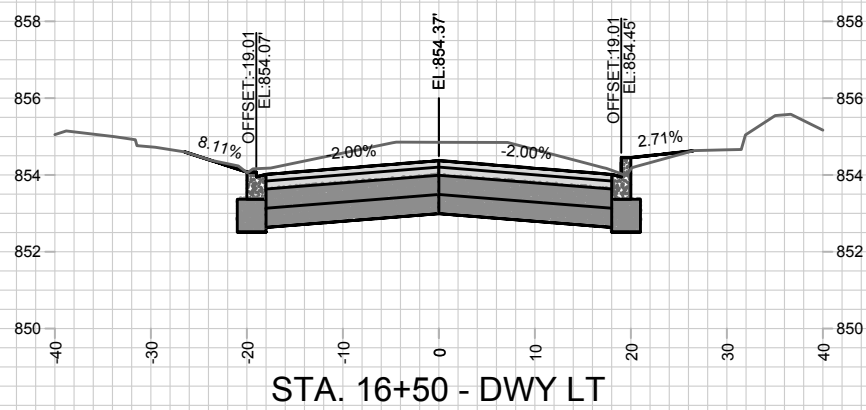
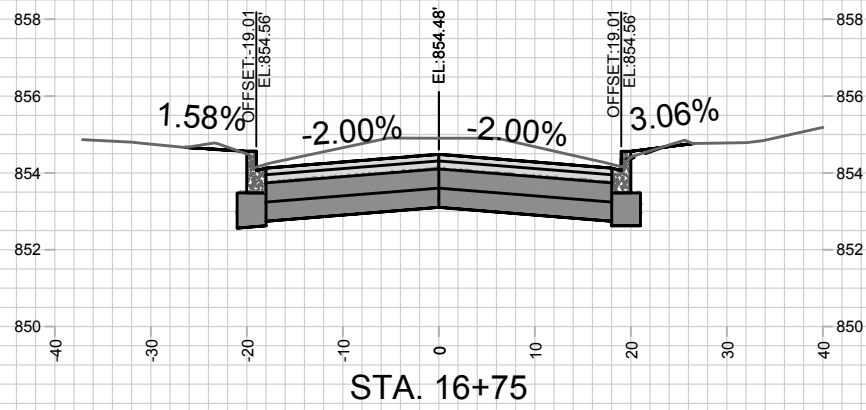
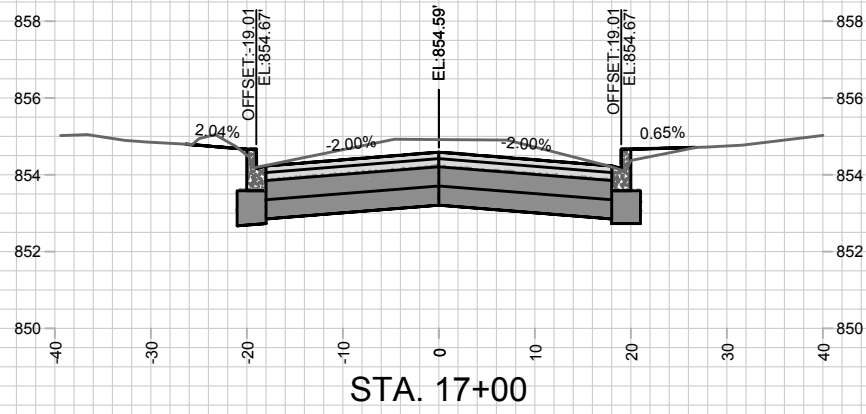
CROSS SECTIONS  
 N. BASSETT ST. RECON 2019  
 CITY OF MADISON



11987  
 X-3



<b>CROSS SECTIONS</b> N. BASSETT ST. RECON 2019 <b>CITY OF MADISON</b>	11987	11987	BT
	MADISON, WI	8299	DATE
	CONTRACT NO:	11987	REVISION
			DATE
			Scale: 1" = 20'
			X-4



MARK	REVISION	DATE	BY
Designed By: JMW	Date: 5-13-19	Scale: 1" = 20'	X-5

11987  
 MADISON, WI  
 CONTRACT NO: 8299

CROSS SECTIONS  
 N. BASSETT ST. RECON 2019  
 CITY OF MADISON



11987  
 X-5